



# Certificate of Analysis

## CANNABUSINESS LABORATORIES, LLC

### Customer:

Black Barn Holdings  
2221 Jessamine Station Rd.  
Wilmore, KY 40390

Sample ID **221103005**  
Order Number **CB221103002**  
Sample Name **Hawaiian Haze**

Received Date **11/3/2022**  
COA Released **11/7/2022**

External Sample ID

Batch Number  
Product Type **Flower**  
Sample Type **Flower**

Comments *Delta 9 THC: 0.048% Dry Weight, 0.484mg/g*

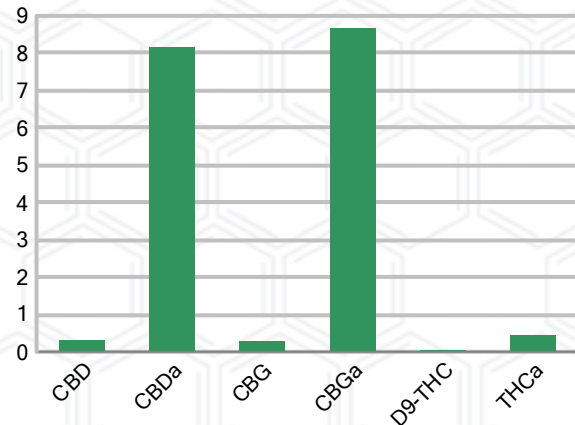
### CANNABINOID PROFILE

Analyte	LOQ (%)	% Dry Weight	mg/g
CBC	0.01	ND	ND
CBD	0.01	0.303	3.028
CBDa	0.01	8.157	81.57
CBDV	0.01	ND	ND
CBG	0.01	0.284	2.840
CBGa	0.01	8.667	86.67
CBN	0.01	ND	ND
d8-THC	0.01	ND	ND
d9-THC	0.01	0.048	0.484
THCa	0.01	0.444	4.440
<b>Total Cannabinoids</b>		<b>17.90</b>	<b>179.0</b>
<b>Total Potential THC</b>		<b>0.438</b>	<b>4.378</b>
<b>Total Potential CBD</b>		<b>7.456</b>	<b>74.56</b>
<b>Total Potential CBG</b>		<b>7.893</b>	<b>78.93</b>
<b>Ratio of Total Potential CBD to Total Potential THC</b>			<b>17.02 : 1</b>
<b>Ratio of Total Potential CBG to Total Potential THC</b>			<b>18.02 : 1</b>

### SAMPLE IMAGE



### CANNABINOIDS % Dry Weight



\*Total Cannabinoids refers to the sum of all cannabinoids detected.

\*Total Potential CBD = (0.877 x CBDa) + CBD. \*Total Potential THC = (0.877 x THCa) + THC. \*Total Potential CBG = (0.877 x CBGa) + CBG.

\*Total Potential THC/CBD are calculated to take into account the loss of an acid group during decarboxylation.



*J. Hobgood*  
Laboratory Manager

SIGNATURE

Jamie Hobgood

LABORATORY MANAGER

11/07/2022 11:35 AM

DATE

This product has been tested by CannaBusiness Laboratories using validated testing methodologies and a quality system. Values reported relate only to the product tested. CannaBusiness Laboratories makes no claims as to the efficacy, safety, or other risks associated with any detected or non-detected levels of any compounds reported herein. This Certificate shall not be reproduced except in full, without the written permission of CannaBusiness Laboratories. Photo is of sample received by the lab and may vary from final packaging. The results apply to the sample as received.



# Certificate of Analysis

## CANNABUSINESS LABORATORIES, LLC

### Customer

Black Barn Holdings  
2221 Jessamine Station Rd.  
Wilmore, KY 40390



Overall Batch Results	
Pesticide	Moisture Content
Potency	Water Activity
Mycotoxins	Heavy Metals
Microbial Screen	Residual Solvents
Terpenoids	

**Sample Name:** Hawaiian Haze

**Sample ID:** 221103005

**Order Number:** CB221103002

**Product Type:** Flower

**Sample Type:** Flower

**Received Date:** 11/03/2022

**Batch Number:**

**COA released:** 11/07/2022 11:35 AM

### Potency (mg/g) Dry Weight

Date Tested: 11/04/2022

Method: CB-SOP-028

Instrument:

<b>0.438 %</b> Total THC	<b>7.456 %</b> Total CBD	<b>17.90 %</b> Total Cannabinoids	<b>179.0 mg/g</b> Total Cannabinoids
-----------------------------	-----------------------------	--------------------------------------	---

Analyte	Result	Units	LOQ	Result	Units
CBC (Cannabichromene)	ND	%	0.010	ND	mg/g
CBD (Cannabidiol)	0.303	%	0.010	3.028	mg/g
CBDa (Cannabidiolic Acid)	8.157	%	0.010	81.57	mg/g
CBDV (Cannabidivarin)	ND	%	0.010	ND	mg/g
CBG (Cannabigerol)	0.284	%	0.010	2.840	mg/g
CBGa (Cannabigerolic Acid)	8.667	%	0.010	86.67	mg/g
CBN (Cannabinol)	ND	%	0.010	ND	mg/g
D8-THC (D8-Tetrahydrocannabinol)	ND	%	0.010	ND	mg/g
D9-THC (D9-Tetrahydrocannabinol)	0.048	%	0.010	0.484	mg/g
THCa (Tetrahydrocannabinolic Acid)	0.444	%	0.010	4.440	mg/g

### Potency (mg/g) Dry Weight

Date Tested: 11/04/2022

Method: CB-SOP-028

Instrument:

Analyte	Result	Units	LOQ	Result	Analyte	Result	Units	LOQ	Result
Percent Moisture	12	%	0.010						



*J. Hobgood*  
Laboratory Manager

Jamie Hobgood

11/07/2022 11:35 AM

SIGNATURE

DATE

NT = Not tested, ND = Not detected; LOQ = Limit of Quantitation; <LOQ = Detected; >ULOL = Above upper limit of linearity; CFU/g = Colony forming units per 1 gram; TNTC = Too numerous to count

This product has been tested by CannaBusiness Laboratories using validated testing methodologies and a quality system. Values reported relate only to the product tested. CannaBusiness Laboratories makes no claims as to the efficacy, safety, or other risks associated with any detected or non-detected levels of any compounds reported herein. This Certificate shall not be reproduced except in full, without the written permission of CannaBusiness Laboratories. Photo is of sample received by the lab and may vary from final packaging. The results apply to the sample as received.